

Copyright © RIGEL All rights reserved. Terms of Use.

RIGEL[®]
green restroom Specialist

RIGEL TECHNOLOGY (S) PTE LTD

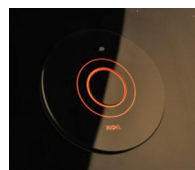
www.rigel.com.sg

2017 AWARDS

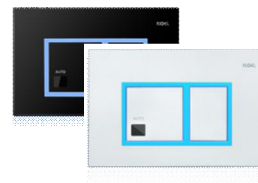
Singapore Good Mark Design



WO8014F
One-piece Water Closet



AFS101DFGRSe
Glass Sense Flush Valve



M201F-5032BL/ML
SENSE+ Auto Concealed Cistern

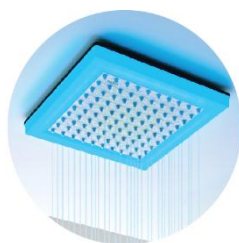


WH9032BP
Whirlwash Intelligent Water Closet



AWARDS

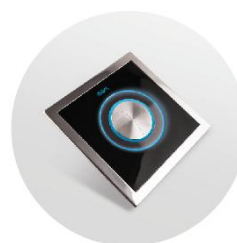
Singapore Good Mark Design



SHL990-HG
LED Hydropower
Rain Shower Head



W2-R-JTL9100HG
LED Hydropower
Basin Mixer



AFS101DGISDFe
WC Glass Flush
Valve



WH12000BP
Rimless
Water Closet



NEW PRODUCT INNOVATIONS

Full Glass Sense Flush Valve

Full Frameless Tempered Glass

Seamless aesthetic made of shatter-safe glass

Anti-Corrosion

Not affected by humidity and temperature

Stain Resistant

Smooth surface that is easy to clean

LED Illuminating Ring

Ambience light as a way to communicate with users

Glass Sense Feature

Automatic sensor with 3 detection mode



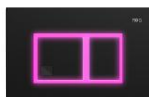
Water Closet Concealed Cistern

SENSOR & MANUAL CONCEALED CISTERN

PRODUCT FEATURES:

- ~ Sensor integrated into water closet system
- ~ Auto sensor flushing for hygiene
- ~ LED light features for indicative functions and ambience
- ~ Large lighted button for accessibility and visibility
- ~ Front or top installation configuration available
- ~ Full flush at 3.5 litres/ Half flush at 2.5 litres

SENSOR



5032BL



5032ML

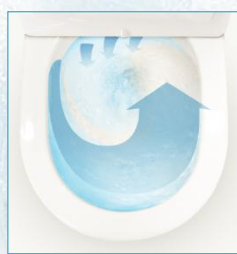
MANUAL



5130W



5080S



COMPLETE WASH



EASY CLEANING



WhirlWash

TECHNOLOGY >>>

Copyright © RIGEL. All rights reserved. Terms of Use.

RIGEL TECHNOLOGY (S) PTE LTD



WO9030F



WC9030F



WP9030BF



WH9030BP

- ~ Patented Technology
- ~ Silent flushing
- ~ Water-saving with a flushing power of 4.5 litres (full flush)
- ~ Powerful flushing action with relatively low water output
- ~ Hygiene emphasized with full surface coverage during flush
- ~ Low maintenance with rimless design that prevents dirt accumulation
- ~ Easy to clean

www.rigel.com.sg

E-Bidet

Rigel® electronic bidet toilet seat comes packed with various smart features that offer users comfort, cleanliness and convenience with its built-in pump motor and self-diagnostics. Child settings are available.

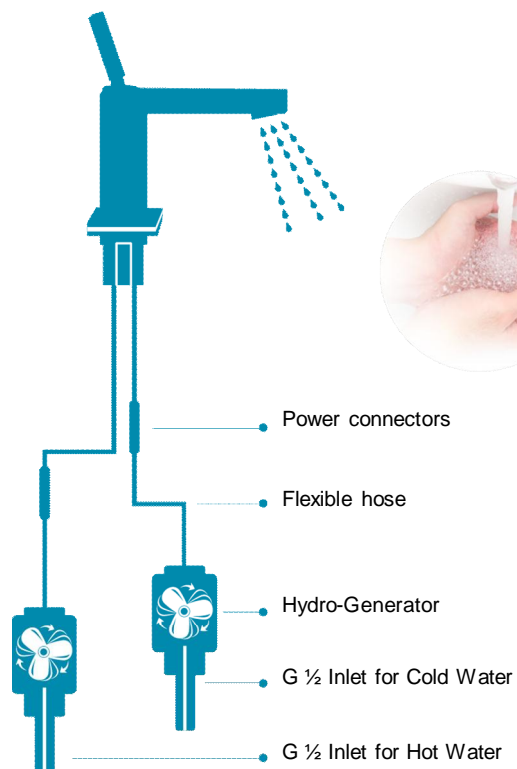


HydroPower Technology

SENSOR TAP >>>

Presenting a green solution with cost savings and safety features, this clever technology is designed with intelligent and intuitive features. Powered by hydro-generators instead of electricity, all processes including the LED light indication with safety colour indication for water temperature are energy saving.

- > **Waterproof compartment for sensor**
- > **Self adjusting signal frequency**
- > **Aerated soft flow**



STL310GN

STL310GNX



ST345AB

ST325

Faucets

LED HYDROPOWER TECHNOLOGY – BASIN MIXER

PRODUCT FEATURES:

- ~ Hydropower operation for energy conservation
- ~ Safety LED ambience lighting indication
- ~ Extended battery lifespan
- ~ Self-diagnostic alert tone for battery replacement



W2-R-JTL9100HG



www.rigel.com.sg

Flush Valves

WATER CLOSET & URINAL FLUSH VALVES

PRODUCT FEATURES:

- ~ Automatic sensor
- ~ Stainless steel piston
- ~ Low water consumption of 4.5-6L (full flush) / 3.0L (half flush) . WC flush valve
- ~ Low water consumption of 1.5L /flush or 0.5L/flush (WELS) . Urinal flush valve



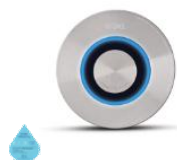
AFS101CGRISDFe



AFS101DGISDFe



AFS101CAISDFe



W3-R-AFS202DRIS



W2-R-FU108DPF

